

# NEWS BULLETIN



**BULLETIN NO: SIE-24-SB\_054655-10**

**TO: ALL DOMETIC NORTH AMERICAN CUSTOMERS AND SALES PROFESSIONALS**  
**DATE: OCTOBER 2024**  
**RE: SAFETY REMINDER, SIERRA DELUXE PLUS TRAILER JACK**

Dear Customers,

We have become aware of an isolated case involving the Deluxe Plus trailer jack (Part No. 054655-10) where the swivel mechanism collapsed as the trailer was being maneuvered by an individual, resulting in an injury. A thorough investigation revealed that the swivel plate locking pin (swivel pin) had not been fully engaged at the time of the incident.

The swivel pin should always be inspected to ensure full engagement into the mounting bracket before each use as stated on the product label and within the Installation and Operation Manual. Inspection to verify full engagement should be conducted when the trailer is properly secured to a tow vehicle. Failure to ensure that the swivel pin is fully engaged can result in property damage, personal injury, or death.

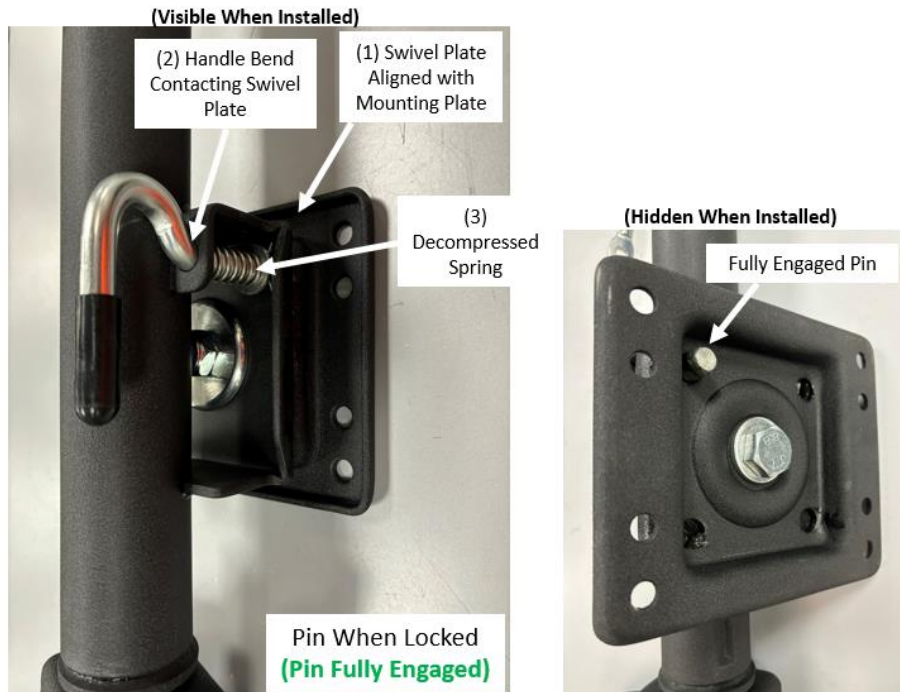
**Visual Confirmation (see Figure 1):**

1. The swivel plate is aligned with the mounting plate.
2. The swivel pin is fully recessed into the mounting bracket to the extent that the bend of the handle contacts the swivel plate.
3. The swivel pin spring is decompressed.

**Physical Confirmation (see Figure 2):**

4. Attempts to rotate the trailer jack outer tube without disengaging the swivel pin.
5. Attempts to rotate the swivel pin handle in both a clockwise and counterclockwise direction.

If the jack swivels without actively disengaging the swivel pin, the jack is not in a state to safely support the load. If the swivel pin handle cannot easily rotate, the handle may be experiencing contact interference with the outer tube and in a state that cannot safely support the load. Conducting these simple checks will ensure that the swivel pin is locked and that the trailer jack can be used as intended.



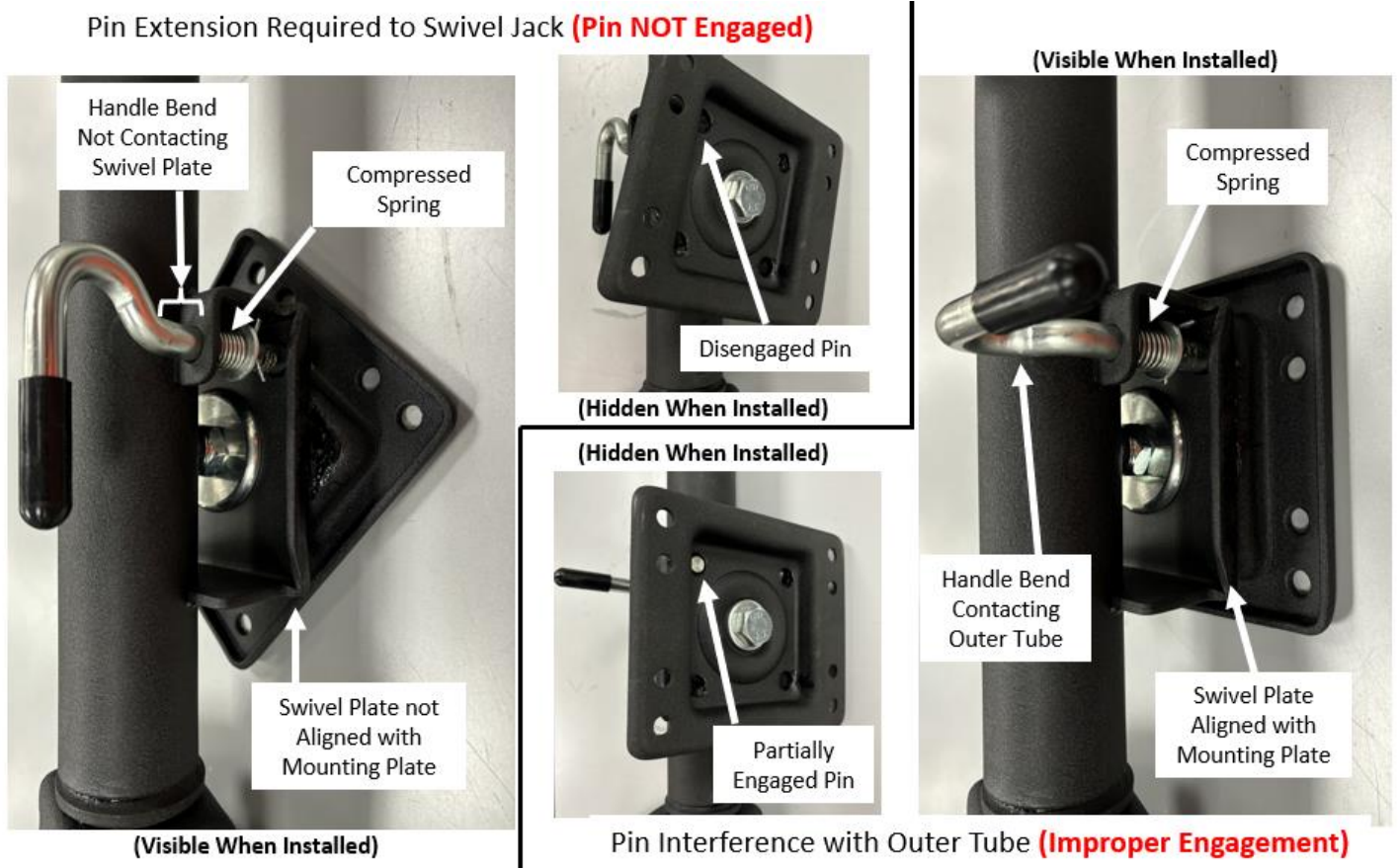
**Figure 1.** Configuration of trailer jack components when the swivel pin **IS** fully engaged.



**Figure 2.** Steps taken to physically ensure the swivel pin is fully engaged.

**Warning:** Only perform these steps when the weight of the trailer is securely supported by the tow vehicle hitch. Keep body, feet, and bystanders clear of the trailer tongue while conducting the inspection.

Figure 3 illustrates instances of improper pin engagement. In these depictions the swivel pin is **NOT** fully engaged, and the jack is not in a condition to safely support the load.



**Figure 3.** Possible configurations of trailer jack components when the swivel pin **IS NOT** fully engaged.

Sierra values the safety of our customers and is actively working to increase the level of detail regarding this inspection process within the official Installation and Operation Manual. Digital versions of the updated manual will be distributed once revisions are complete and will also be made available for download at [www.sierraparts.com](http://www.sierraparts.com). If you have any questions regarding this or any other product, please contact your Dometic Sales Professional today or contact us at 877-663-8396. Thank you for your continued support of Sierra branded products.